

HEEEY!

First of all, **thank you so much** for considering commissioning a piece! It means the world to me that you love what I do.

The following is a **rough base price list** varying with detail and storytelling. Please remember that this is art and not a service or manufactured piece. My prices reflect my hard work, creativity and the time it takes me to create each piece. Please be respectful of my prices.

Each piece is exclusive, made by hand and includes:

- A brand new controller (XBOX or PS5)
- A wax-sealed, numbered Rhimagine collector's card
- A Rhimagine sticker

THANK YOU!



WHISPER TIER

£225+

- Limited colour palette
- Big blocky shapes
- Simple characters (only cartoon style)
- Additional detailing such as lettering
- A clean art piece



ECHO TIER



£275+

- More colours and detail but not on the same level as the Legacy Tier
- Design covers roughly half of the controller



LEGACY TIER



Best for storytelling
and detailed
backgrounds

£350+

- Very high level of intricacy, detail and shading
- Rich storytelling
- More stylised or realistic
- Design covers the entire front of the controller
- Optional back painting

EXTRAS

COMMISSIONED STANDS

You can request a customised PS5 or XBOX stand for an additional £30+ depending on the complexity of the design, but they cannot be commissioned separately.

PAINTING ON THE BACK

Please mention if you would like me to paint the back. (Only available in Legacy Tier).

WORLDWIDE DELIVERY

UK shipping is typically £4.95 and will be added to the final price. If you do not live in the UK, please let me know your country so I can check delivery prices for you.



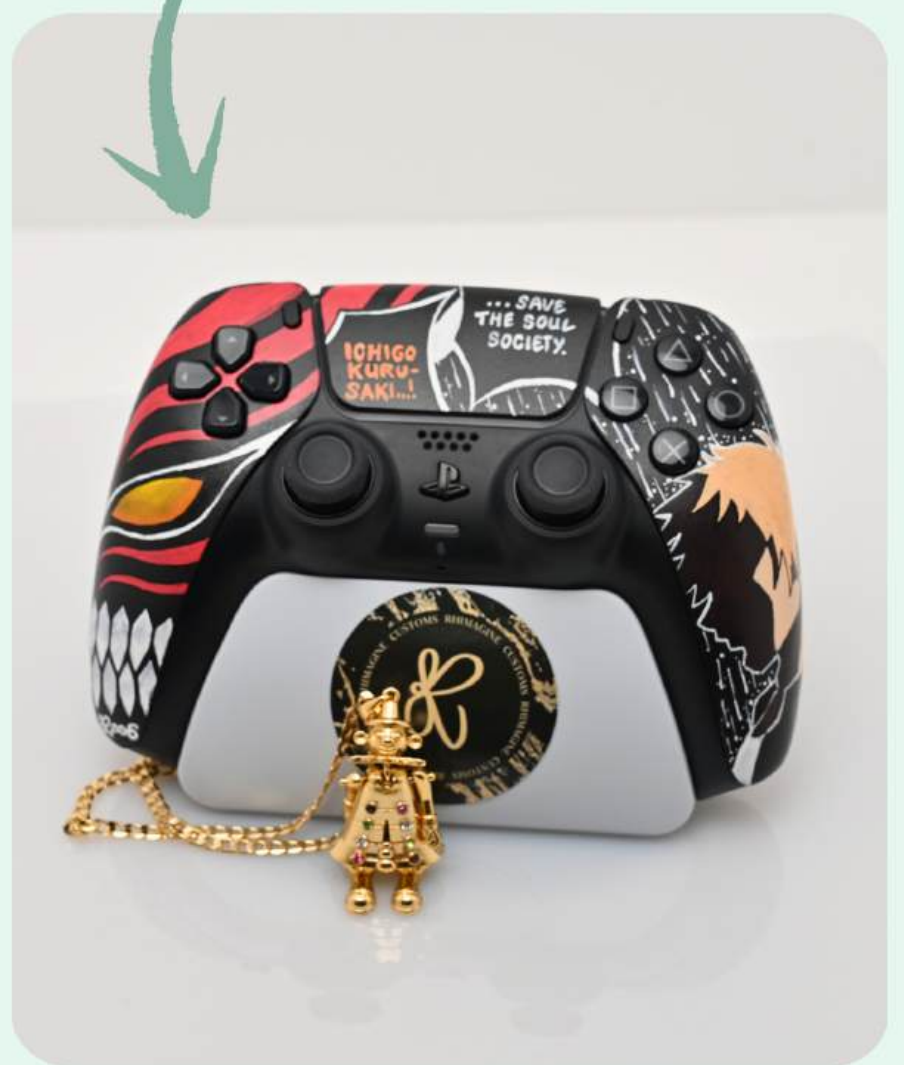
CHOOSING CONTROLLER COLOUR

I only do **black and white** controllers. When choosing a controller colour, keep in mind that colours will show **more vibrant** on a white controller. Black controllers, however, are what I'd recommend for the Legacy Tier, as it creates a more **cohesive design**.



WHITE

BLACK



HOW TO ORDER

On the 1st of each month I will be opening slots for **only 8 customs** on a first-come first-serve basis. I will announce once this list is full.

To order a custom, please send me a direct message with your **full name, controller colour/model, tier and design. Also send up to 3 reference images** you'd like me to take inspiration from (such as a character). I will give you a custom quote based on the level of complexity of your request.

I will only be replying to direct messages from **Monday at 10am – Friday at 9pm**. However, feel free to message me at any other point as I reply to DMs in order.



PAYMENT

Once you have accepted, I will send you a **link to my Paypal**. You will be required to send a non-refundable deposit which counts towards the full amount and usually half of the asking price. This secures your spot. The remaining amount will be required before delivery.

Please expect to wait at least 1 month before your custom is completed.



FAQ

Can I send my own controller?

No, I only customise new controllers, which I order directly. This helps me guarantee the best possible quality for your custom.

Can I play with them?

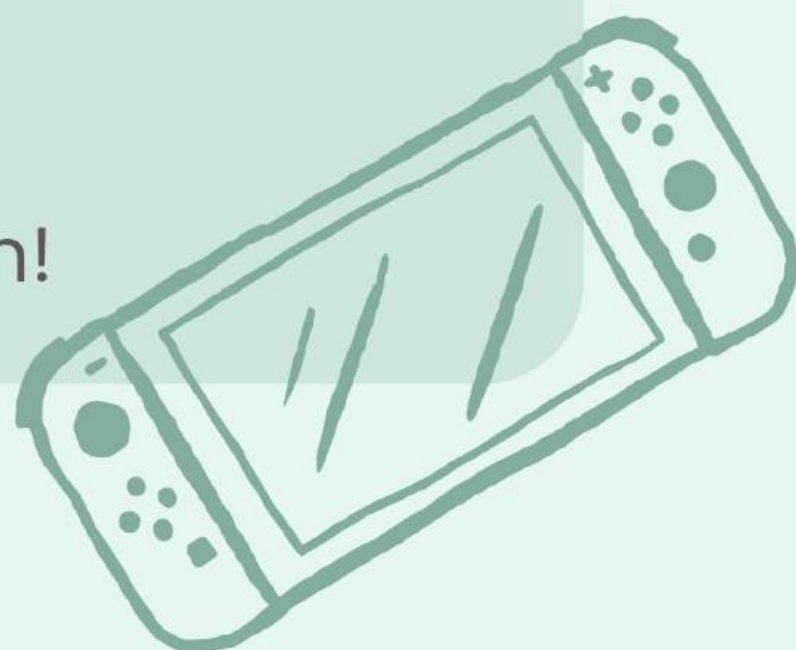
The controllers are still completely playable, however the touchpad may be less sensitive.

Can I see the design before I order?

I don't start designing until the deposit is in place, just because it's a very intricate process and takes a lot of care.

Do you do Nintendo?

Nintendo is coming soon!



MAINTAINENCE

Each design is hand-painted and sealed with protective sprays to help it last — but here are a few extra tips to keep your controller looking fresh for as long as possible:

Clean using a dry, soft cloth only

No wipes, water, or harsh cleaners

Keep out of direct sunlight

Use with clean hands

Store safely when not in use

No rage-throws please :)

And last of all...display it proudly!

