

Graduate Aptitude Test in Engineering 2017

Question Paper Name: Chemistry 5th Feb 2017
Subject Name: Chemistry
Duration: 180
Total Marks: 100



Organizing Institute: Indian Institute of Technology Roorkee



Question Number : 1**Correct : 1 Wrong : -0.33**

Consider N particles at temperature T , pressure P , volume V and chemical potential μ having energy E . The parameters that are kept constant for a canonical ensemble are

- (A) N, V, T (B) N, V, E (C) N, P, T (D) μ, V, T

Question Number : 2**Correct : 1 Wrong : -0.33**

For *ortho*-hydrogen, the nuclear wavefunction and the rotational quantum number, respectively, are

- (A) antisymmetric and even (B) symmetric and odd
(C) symmetric and even (D) antisymmetric and odd

Question Number : 3**Correct : 1 Wrong : -0.33**

m_1 and m_2 are the slopes (dP/dT) of the solid-liquid equilibrium lines in the P - T phase diagrams of H_2O and CO_2 , respectively. For $P < 10$ atm, the values of m_1 and m_2 are

- (A) $m_1 > 0$ and $m_2 > 0$ (B) $m_1 > 0$ and $m_2 < 0$ (C) $m_1 < 0$ and $m_2 < 0$ (D) $m_1 < 0$ and $m_2 > 0$

Question Number : 4**Correct : 1 Wrong : 0**

The rate constant of a reaction is $1.25 \times 10^{-4} \text{ mol L}^{-1} \text{ s}^{-1}$. If the initial concentration of the reactant is 0.250 mol L^{-1} , the total time (in seconds) required for complete conversion is _____

Question Number : 5**Correct : 1 Wrong : -0.33**

Consider an ideal gas of volume V at temperature T and pressure P . If the entropy of the gas is S , the partial derivative $(\partial P/\partial S)_V$ is equal to

- (A) $(\partial T/\partial P)_S$ (B) $(\partial T/\partial V)_P$ (C) $-(\partial T/\partial V)_S$ (D) $(\partial T/\partial S)_P$

Question Number : 6**Correct : 1 Wrong : -0.33**

The wavelength associated with a particle in one-dimensional box of length L is (n refers to the quantum number)

- (A) $2L/n$ (B) L/n (C) nL (D) $L/2n$

Question Number : 7**Correct : 1 Wrong : 0**

The dependence of rate constant k on temperature T (in K) of a reaction is given by the expression

$$\ln k = [(-5000 \text{ K})/T] + 10$$

The activation energy of the reaction (in kJ mol^{-1}) is _____ (up to two decimal places)

Question Number : 8**Correct : 1 Wrong : 0**

The lowest energy of a quantum mechanical one-dimensional simple harmonic oscillator is 300 cm^{-1} . The energy (in cm^{-1}) of the next higher level is _____

Question Number : 9**Correct : 1 Wrong : -0.33**

The electronic ground state term for the chromium ion in $[\text{Cr}(\text{CN})_6]^{4-}$ is

- (A) ^3F (B) ^3H (C) ^3G (D) ^5D

Question Number : 10**Correct : 1 Wrong : -0.33**

The VO_4^{3-} , CrO_4^{2-} and MnO_4^- ions exhibit intense ligand to metal charge transfer transition. The wavelengths of this transition follow the order

- (A) $\text{CrO}_4^{2-} < \text{VO}_4^{3-} < \text{MnO}_4^-$ (B) $\text{MnO}_4^- < \text{VO}_4^{3-} < \text{CrO}_4^{2-}$
(C) $\text{VO}_4^{3-} < \text{CrO}_4^{2-} < \text{MnO}_4^-$ (D) $\text{CrO}_4^{2-} < \text{MnO}_4^- < \text{VO}_4^{3-}$

Question Number : 11**Correct : 1 Wrong : -0.33**

The lanthanide ion that exhibits color in aqueous solution is

- (A) La(III) (B) Eu(III) (C) Gd(III) (D) Lu(III)

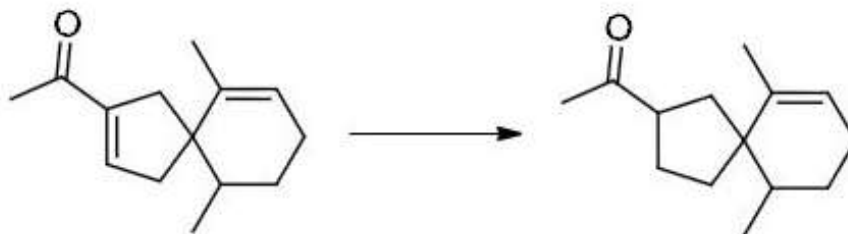
Question Number : 12**Correct : 1 Wrong : 0**

The hapticity of cycloheptatriene, (C_7H_8) , in $\text{Mo}(\text{C}_7\text{H}_8)(\text{CO})_3$ is _____

Question Number : 17

Correct : 1 Wrong : -0.33

The most suitable reagent for the following transformation is



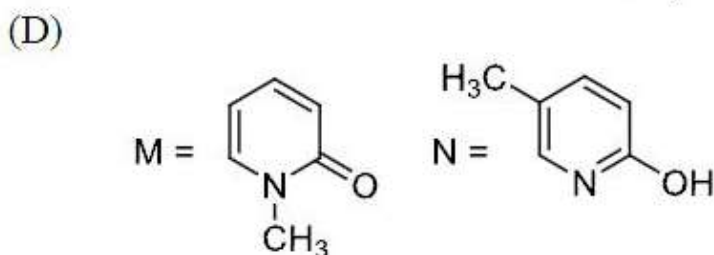
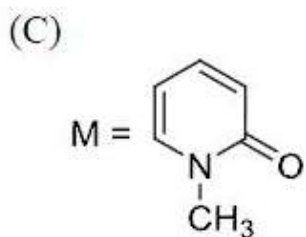
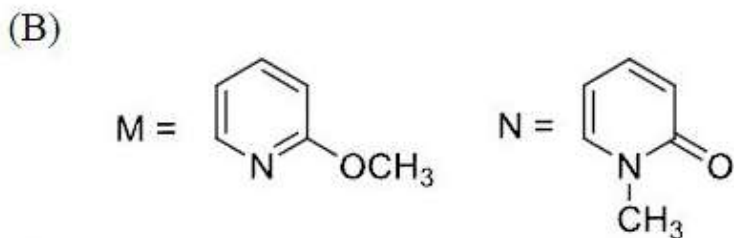
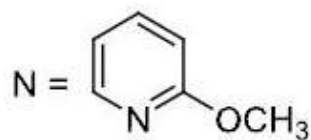
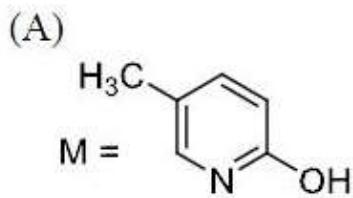
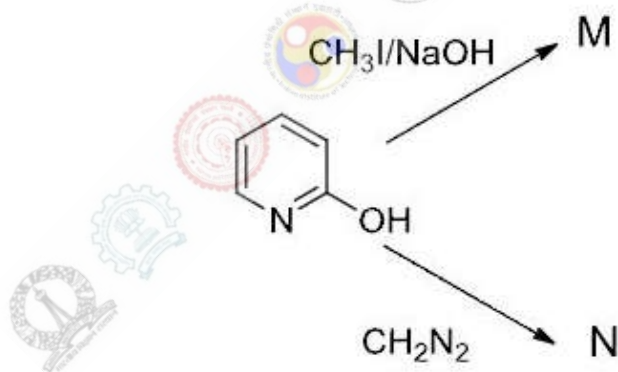
- (A) Li / Liq. NH₃
(C) LiAlH₄

- (B) PtO₂ / H₂
(D) B₂H₆

Question Number : 18

Correct : 1 Wrong : -0.33

The major products M and N formed in the following reactions are



Question Number : 19

Correct : 1 Wrong : -0.33

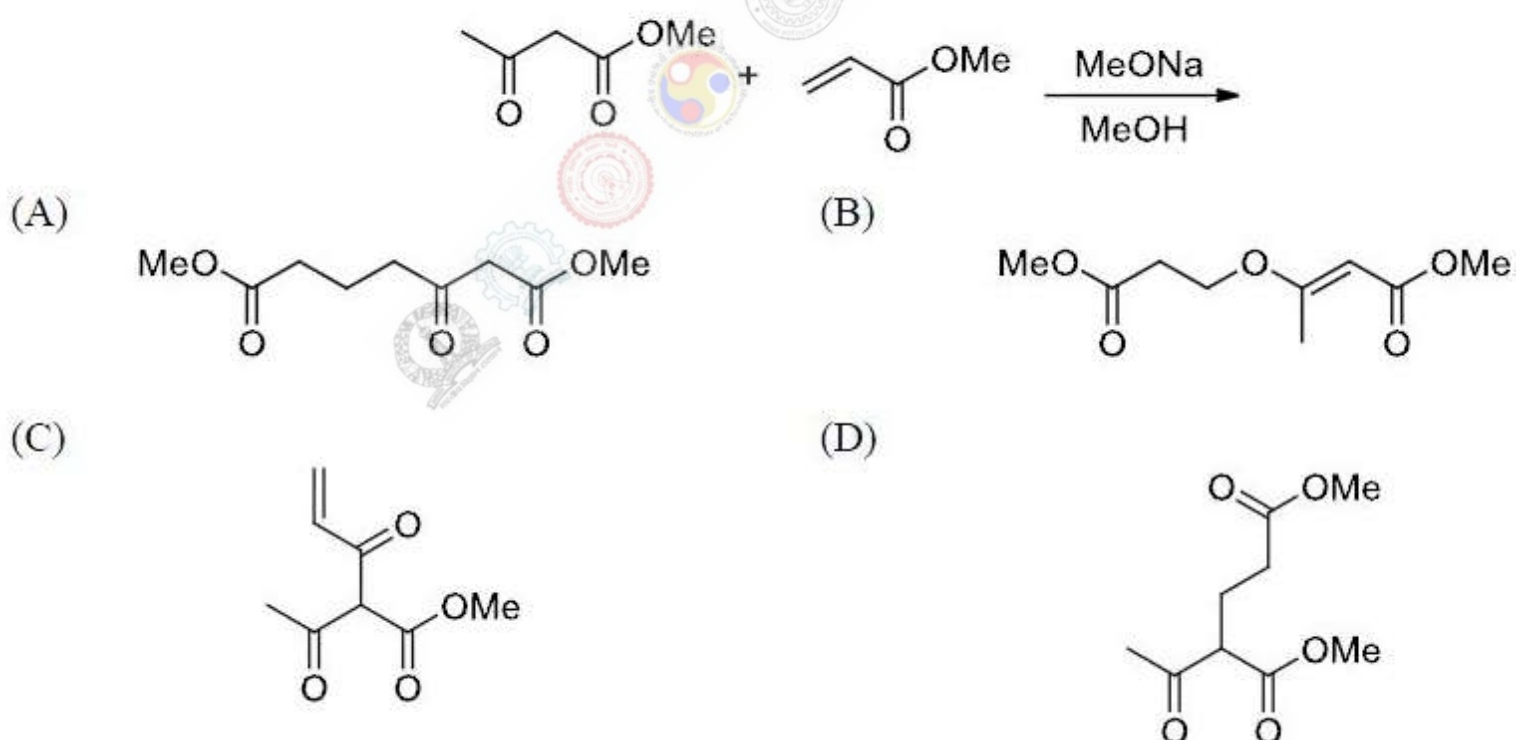
The ^{13}C NMR spectrum of acetone- d_6 has a signal at 30 ppm as a septet in the intensity ratio

- (A) 1 : 6 : 15 : 20 : 15 : 6 : 1
- (B) 1 : 3 : 6 : 7 : 6 : 3 : 1
- (C) 1 : 2 : 3 : 5 : 3 : 2 : 1
- (D) 1 : 3 : 7 : 10 : 7 : 3 : 1

Question Number : 20

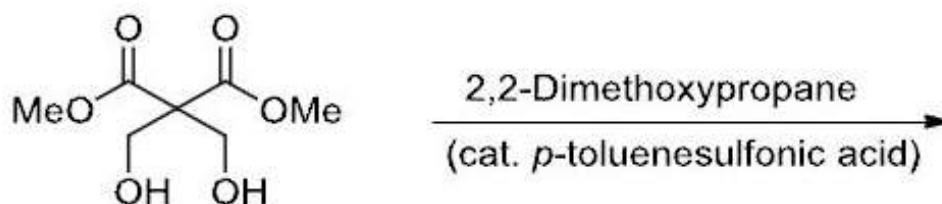
Correct : 1 Wrong : -0.33

The major product formed in the following reaction is

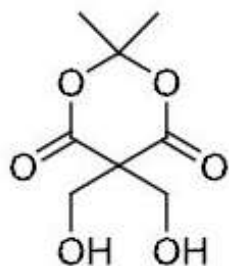


Question Number : 21**Correct : 1 Wrong : -0.33**

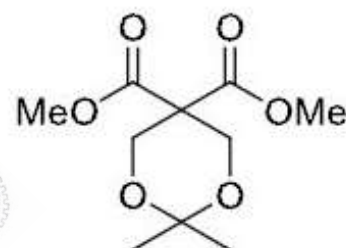
The major product obtained in the following reaction is



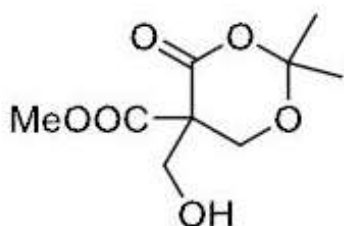
(A)



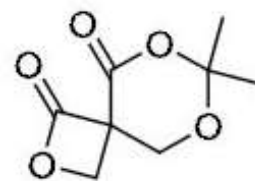
(B)



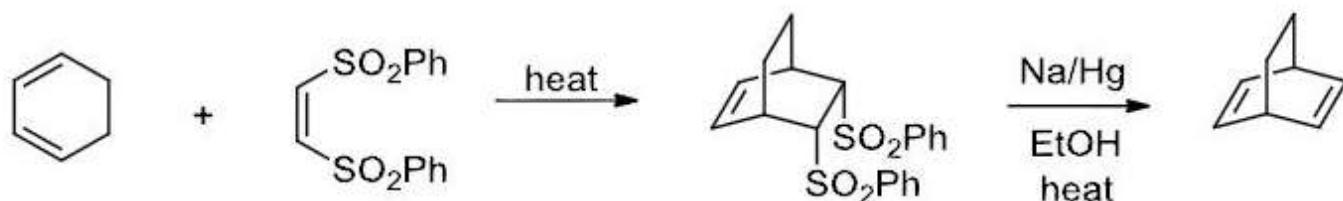
(C)



(D)

**Question Number : 22****Correct : 1 Wrong : -0.33**

In the two step reaction sequence given below, the starting bis-sulfone acts as



- (A) a dienophile and synthetic equivalent of acetylene
- (B) a dienophile and synthetic equivalent of ethylene
- (C) a dipolarophile and synthetic equivalent of acetylene
- (D) a dipolarophile and synthetic equivalent of ethylene

Question Number : 23

Correct : 1 Wrong : -0.33

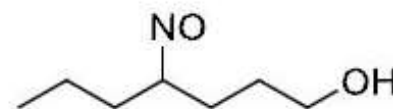
The major product formed in the following photochemical reaction is



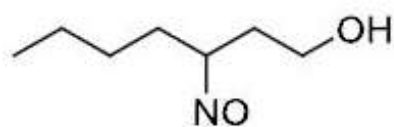
(A)



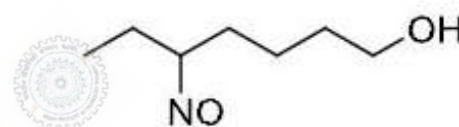
(B)



(C)



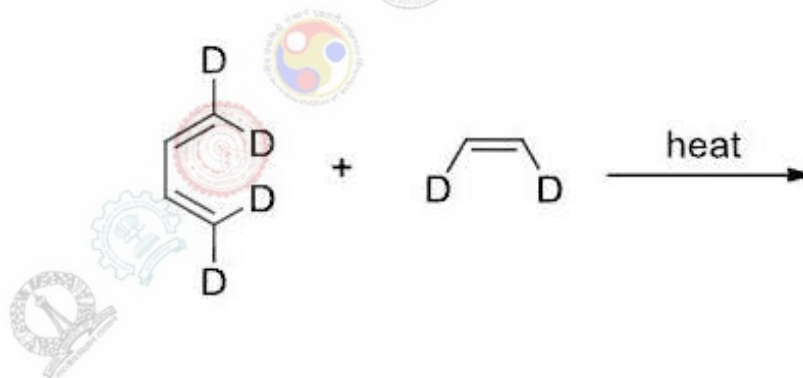
(D)



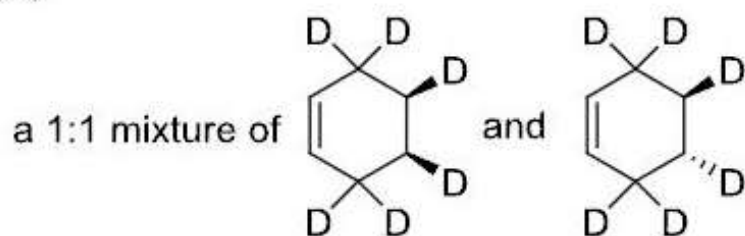
Question Number : 24

Correct : 1 Wrong : -0.33

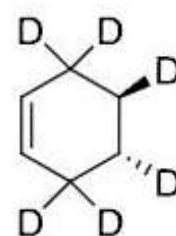
The product formed in the following reaction is



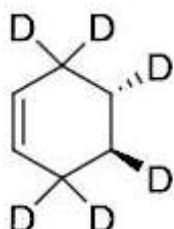
(A)



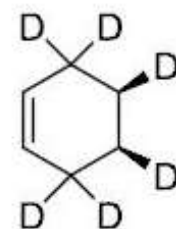
(B)



(C)



(D)



Question Number : 25

Correct : 1 Wrong : 0

The number of possible stereoisomers for cyclononene is _____

Question Number : 26

Correct : 2 Wrong : 0

The mobility of a univalent ion in aqueous solution is $6.00 \times 10^{-8} \text{ m}^2 \text{ s}^{-1} \text{ V}^{-1}$ at 300 K. Its diffusion coefficient at 300 K is $X \times 10^{-9} \text{ m}^2 \text{ s}^{-1}$. The value of X is _____ (up to two decimal places)

Question Number : 27

Correct : 2 Wrong : 0

For the following consecutive first order reactions



the time (in seconds) required for Y to reach its maximum concentration (assuming only X is present at time $t = 0$) is _____ (up to two decimal places)

Question Number : 28

Correct : 2 Wrong : 0

Under physiological conditions, the conversion of CO_2 to bicarbonate ion by carbonic anhydrase enzyme (MW = $30,000 \text{ g mol}^{-1}$) has a turnover number of $4.00 \times 10^5 \text{ s}^{-1}$. The minimum amount of enzyme (in μg) required to convert 0.44 g of CO_2 to bicarbonate ions in 100 seconds is _____ (up to two decimal places)

Question Number : 29**Correct : 2 Wrong : 0**

Assume 1,3,5-hexatriene to be a linear molecule and model the π electrons as particles in a one-dimensional box of length 0.70 nm. The wavelength (in nm) corresponding to the transition from the ground-state to the first excited-state is _____

Question Number : 30**Correct : 2 Wrong : 0**

The standard Gibbs free energy change of the reaction shown below is -2.7 kJ mol^{-1} .



Given that $E^0(\text{Pb}^{2+}/\text{Pb})$ is -0.126 V , the value of $E^0(\text{Sn}^{2+}/\text{Sn})$ in V is _____ (up to two decimal places)

Question Number : 31**Correct : 2 Wrong : 0**

The dissociative chemisorption of $\text{X}_2(\text{g})$ on a metal surface follows Langmuir adsorption isotherm. The ratio of the rate constants of the adsorption and desorption processes is 4.0 atm^{-1} . The fractional surface coverage of X(adsorbed) at 1.0 atm pressure is _____ (up to two decimal places)

Question Number : 32**Correct : 2 Wrong : 0**

The ionic activity coefficients of Ca^{2+} and F^- are 0.72 and 0.28, respectively. The mean activity coefficient of CaF_2 is _____ (up to two decimal places)

Question Number : 33**Correct : 2 Wrong : 0**

The angle of orientation (in degrees) of the angular momentum vector with respect to z -axis for $l = 2$ and $m_l = +2$ state of H-atom is _____ (up to two decimal places)

Question Number : 34**Correct : 2 Wrong : 0**

The Gibbs free energy of mixing is denoted as ΔG_{mix} . 1.0 mole of He, 3.0 moles of Ne and 2.0 moles of Ar are mixed at the same pressure and temperature. Assuming ideal gas behavior, the value of $\Delta G_{\text{mix}}/RT$ is _____ (up to two decimal places)

Question Number : 35**Correct : 2 Wrong : 0**

$\Psi = [c\phi_1 - (1/\sqrt{3})\phi_2]$ represents a normalized molecular orbital constructed from two different atomic orbitals ϕ_1 and ϕ_2 that form an orthonormal set. The value of $|c|$ is _____ (up to two decimal places)

Question Number : 36**Correct : 2 Wrong : -0.66**

In cyclophosphazenes, $(\text{NPX}_2)_3$ ($X = \text{F}, \text{Cl}, \text{Br}$ and Me), the strength of P–N π -bond varies with X in the order

- (A) $\text{F} > \text{Cl} > \text{Br} > \text{Me}$ (B) $\text{Me} > \text{F} > \text{Cl} > \text{Br}$ (C) $\text{Br} > \text{Cl} > \text{F} > \text{Me}$ (D) $\text{Me} > \text{Br} > \text{Cl} > \text{F}$

Question Number : 37**Correct : 2 Wrong : -0.66**

The structure type and shape of the polyhedral (skeletal) framework of the carborane, $\text{Me}_2\text{C}_2\text{B}_{10}\text{H}_{10}$, respectively, are

- (A) *nido* and dodecahedron (B) *closo* and icosahedron
(C) *nido* and icosahedron (D) *closo* and dodecahedron

Question Number : 38**Correct : 2 Wrong : -0.66**

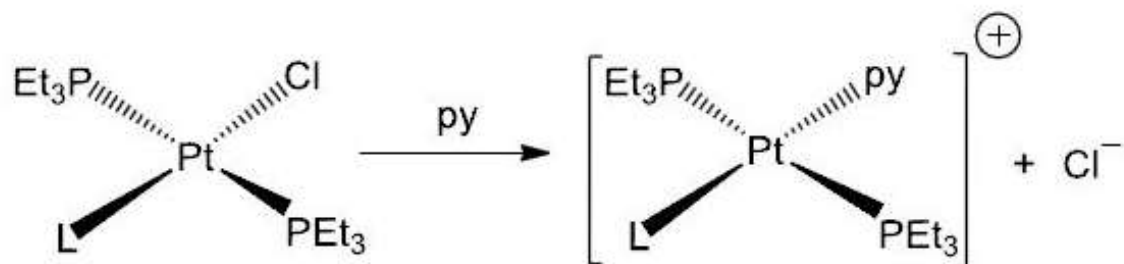
If Δ_o is the octahedral splitting energy and P is the electron pairing energy, then the crystal-field stabilization energy (CFSE) of $[\text{Co}(\text{NH}_3)_6]^{2+}$ is

- (A) $-0.8 \Delta_o + 2 P$ (B) $-0.8 \Delta_o + 1 P$
(C) $-0.8 \Delta_o$ (D) $-1.8 \Delta_o + 3 P$

Question Number : 39

Correct : 2 Wrong : -0.66

The rates of substitution for the following reaction vary with L in the order



L = CH_3^{-} , Cl^{-} , Ph^{-} and H^{-}

(A) $\text{CH}_3^{-} > \text{Cl}^{-} > \text{Ph}^{-} > \text{H}^{-}$

(B) $\text{Cl}^{-} > \text{Ph}^{-} > \text{H}^{-} > \text{CH}_3^{-}$

(C) $\text{Ph}^{-} > \text{CH}_3^{-} > \text{H}^{-} > \text{Cl}^{-}$

(D) $\text{H}^{-} > \text{CH}_3^{-} > \text{Ph}^{-} > \text{Cl}^{-}$

Question Number : 40

Correct : 2 Wrong : -0.66

The product formed in the reaction of $\text{MeMn}(\text{CO})_5$ with ^{13}CO is

(A) $(\text{Me}^{13}\text{CO})\text{Mn}(\text{CO})_5$

(B) $(\text{MeCO})\text{Mn}(\text{CO})_5$

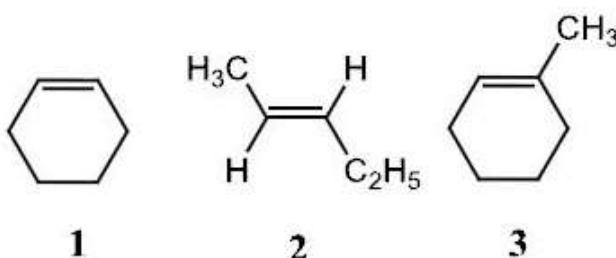
(C) $(\text{MeCO})\text{Mn}(\text{CO})_4(^{13}\text{CO})$

(D) $(\text{Me}^{13}\text{CO})\text{Mn}(\text{CO})_4(^{13}\text{CO})$

Question Number : 41

Correct : 2 Wrong : -0.66

For the following three alkenes, 1, 2 and 3, the rates of hydrogenation using Wilkinson's catalyst at 25°C vary in the order



(A) $1 > 3 > 2$

(B) $1 > 2 > 3$

(C) $2 > 1 > 3$

(D) $2 > 3 > 1$

Question Number : 42

Correct : 2 Wrong : 0

^{210}Bi undergoes β^- decay to $\frac{1}{8}$ of its initial amount in 15 days. The time required for its decay to $\frac{1}{4}$ of its initial amount is _____ days (up to two decimal places).

Question Number : 43

Correct : 2 Wrong : -0.66

The metal ion and the macrocyclic skeleton present in the green pigment of plants, respectively, are

- (A) Mg(II) and chlorin
- (B) Mg(II) and corrin
- (C) Mn(II) and chlorin
- (D) Mg(II) and porphine

Question Number : 44

Correct : 2 Wrong : -0.66

The spinel structure of MgAl_2O_4 has cubic close packed arrangement of oxide ions. The fractions of the octahedral and tetrahedral sites occupied by cations, respectively, are

- (A) $\frac{1}{8}$ and $\frac{1}{2}$
- (B) $\frac{1}{4}$ and $\frac{1}{2}$
- (C) $\frac{1}{2}$ and $\frac{1}{4}$
- (D) $\frac{1}{2}$ and $\frac{1}{8}$

Question Number : 45

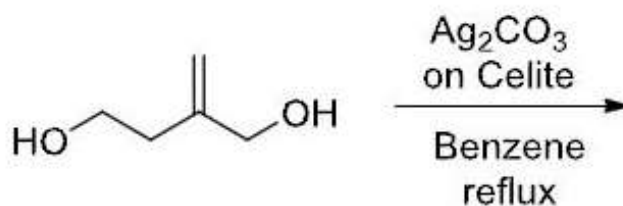
Correct : 2 Wrong : 0

The diffusion limiting current (I_d) at a dropping mercury electrode for an aqueous Mg(II) solution of concentration 'c' (mol L^{-1}) is $300 \mu\text{A}$. If 'c' is increased by 0.1 mol L^{-1} , I_d increases to $900 \mu\text{A}$. The value of 'c' (in mol L^{-1}) is _____ (up to two decimal places)

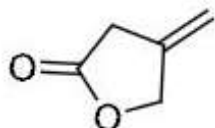
Question Number : 46

Correct : 2 Wrong : -0.66

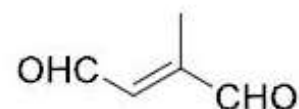
The major product formed in the following reaction is



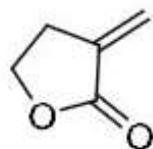
(A)



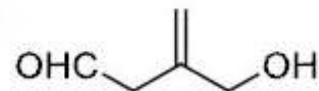
(B)



(C)



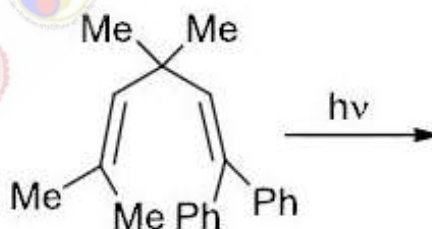
(D)



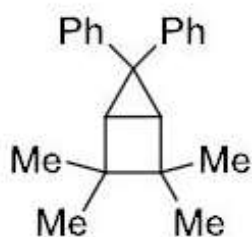
Question Number : 47

Correct : 2 Wrong : -0.66

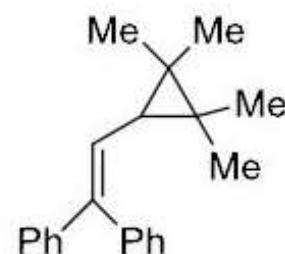
The product formed in the following photochemical reaction is



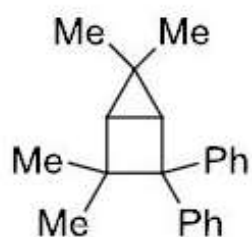
(A)



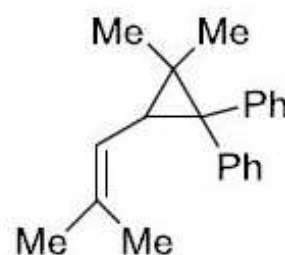
(B)



(C)



(D)

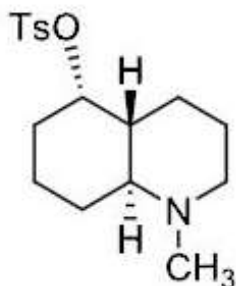


Question Number : 48

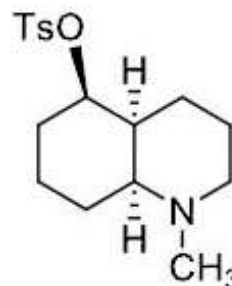
Correct : 2 Wrong : -0.66

Among the following decahydroquinoline toluenesulfonates (Ts), the one that yields 9-methylamino-*E*-non-5-enal as a major product upon aqueous solvolysis is

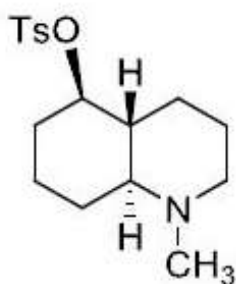
(A)



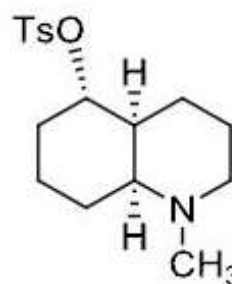
(B)



(C)



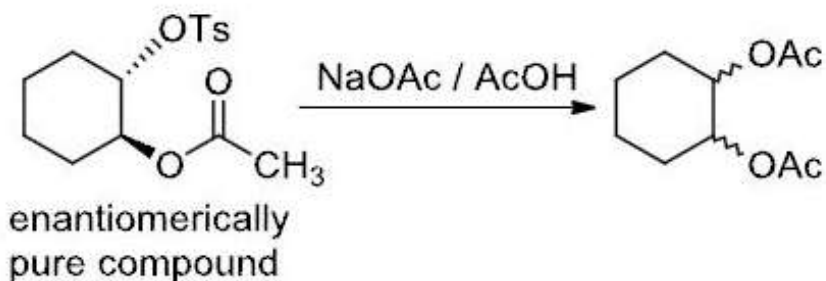
(D)



Question Number : 49

Correct : 2 Wrong : -0.66

The product obtained in the following solvolysis reaction is

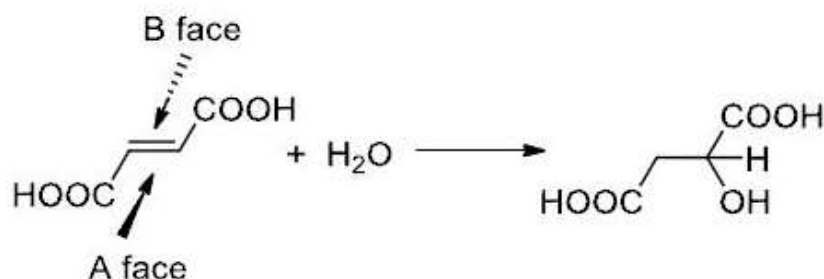


- (A) a racemic mixture of *trans* 1,2-diacetoxycyclohexane
- (B) enantiomerically pure *trans* 1,2-diacetoxycyclohexane
- (C) racemic *cis* 1,2-diacetoxycyclohexane
- (D) a mixture of *cis* and *trans* 1,2-diacetoxycyclohexane

Question Number : 52

Correct : 2 Wrong : -0.66

Hydration of fumaric acid gives malic acid as shown below. Assume that addition of water takes place specifically from A face or B face. The correct statement pertaining to stereochemistry of malic acid formed is



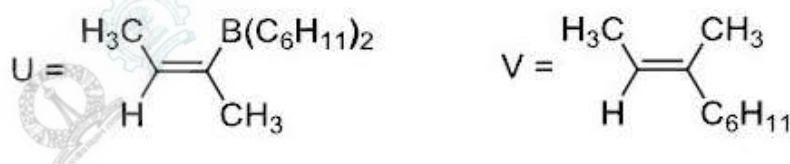
- (A) addition specifically from A face gives *S* isomer of malic acid
- (B) addition specifically from B face gives *S* isomer of malic acid
- (C) addition specifically from A face gives *R* isomer of malic acid
- (D) addition specifically from B face gives a racemic mixture of malic acid

Question Number : 53

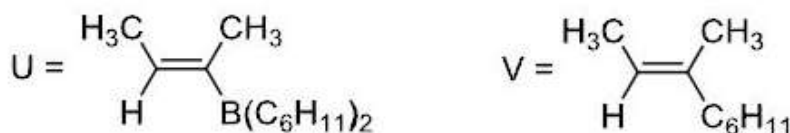
Correct : 2 Wrong : -0.66

Hydroboration of 2-butyne with $(\text{C}_6\text{H}_{11})_2\text{BH}$ yields the intermediate U, which on treatment with I_2 and NaOMe at -78°C , gives product V. The structures of U and V are

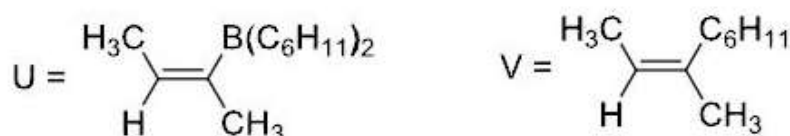
(A)



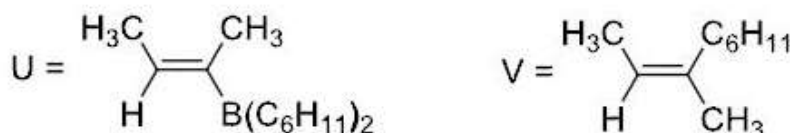
(B)



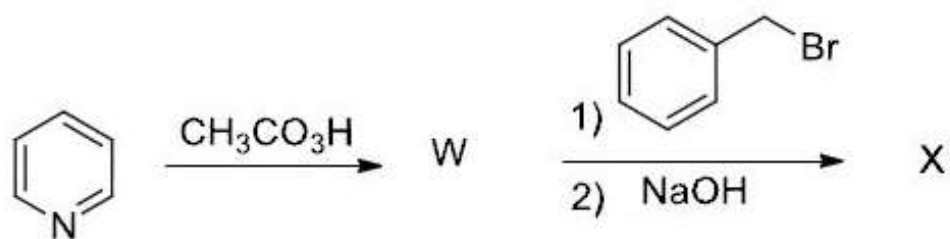
(C)



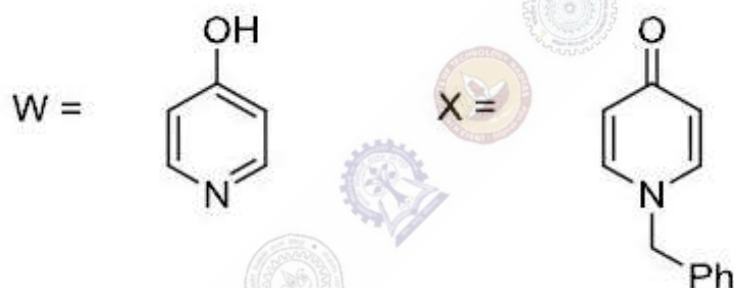
(D)



The structures of the major products W and X in the following synthetic scheme are



(A)



(B)



(C)



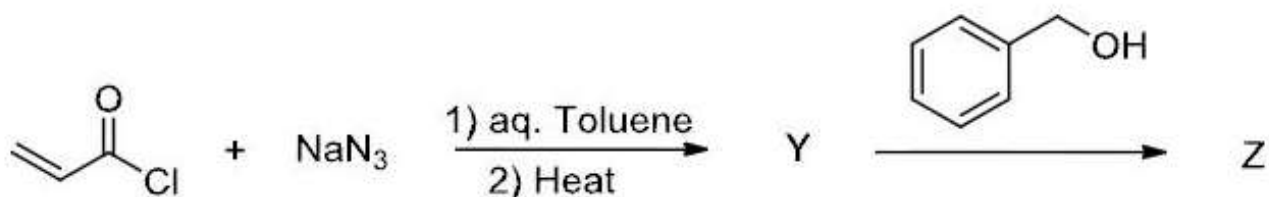
(D)



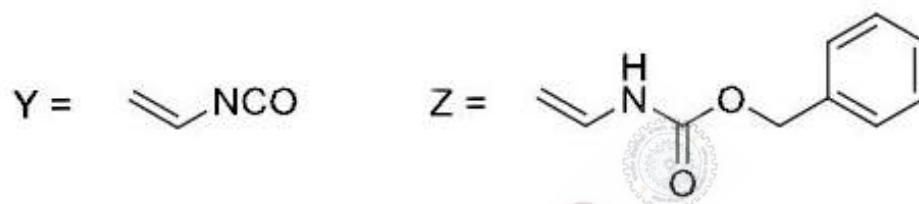
Question Number : 55

Correct : 2 Wrong : -0.66

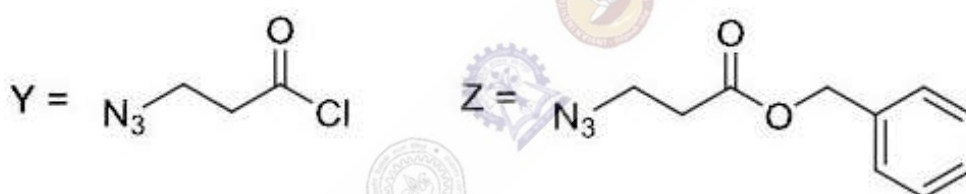
The major products Y and Z in the following reaction sequence are



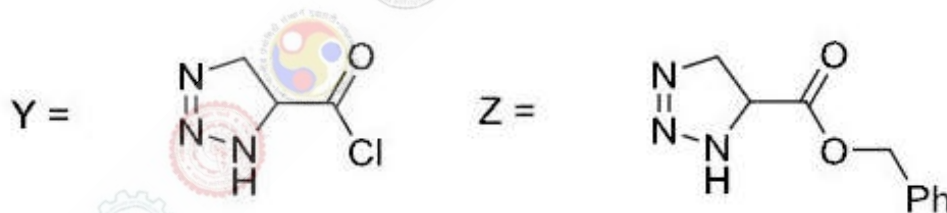
(A)



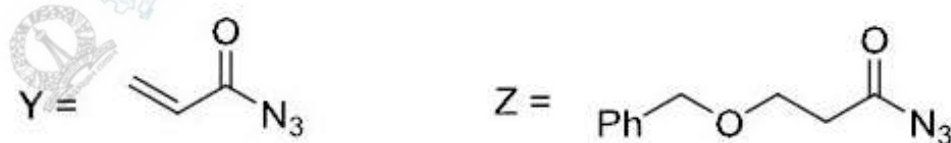
(B)



(C)



(D)



Question Number : 56

Correct : 1 Wrong : -0.33

She has a sharp tongue and it can occasionally turn _____

(A) hurtful

(B) left

(C) methodical

(D) vital

Question Number : 57

Correct : 1 Wrong : -0.33

I _____ made arrangements had I _____ informed earlier.

- (A) could have, been
- (C) had, have

- (B) would have, being
- (D) had been, been

Question Number : 58

Correct : 1 Wrong : -0.33

In the summer, water consumption is known to decrease overall by 25%. A Water Board official states that in the summer household consumption decreases by 20%, while other consumption increases by 70%.

Which of the following statements is correct?

- (A) The ratio of household to other consumption is 8/17
- (B) The ratio of household to other consumption is 1/17
- (C) The ratio of household to other consumption is 17/8
- (D) There are errors in the official's statement.

Question Number : 59

Correct : 1 Wrong : -0.33

40% of deaths on city roads may be attributed to drunken driving. The number of degrees needed to represent this as a slice of a pie chart is

- (A) 120
- (B) 144
- (C) 160
- (D) 212

Question Number : 60

Correct : 1 Wrong : -0.33

Some tables are shelves. Some shelves are chairs. All chairs are benches. Which of the following conclusions can be deduced from the preceding sentences?

- i. At least one bench is a table
- ii. At least one shelf is a bench
- iii. At least one chair is a table
- iv. All benches are chairs

- (A) Only i
- (B) Only ii
- (C) Only ii and iii
- (D) Only iv

Question Number : 61

Correct : 2 Wrong : -0.66

“If you are looking for a history of India, or for an account of the rise and fall of the British Raj, or for the reason of the cleaving of the subcontinent into two mutually antagonistic parts and the effects this mutilation will have in the respective sections, and ultimately on Asia, you will not find it in these pages; for though I have spent a lifetime in the country, I lived too near the seat of events, and was too intimately associated with the actors, to get the perspective needed for the impartial recording of these matters”.

Here, the word ‘antagonistic’ is closest in meaning to

- (A) impartial (B) argumentative (C) separated (D) hostile

Question Number : 62

Correct : 2 Wrong : -0.66

S, T, U, V, W, X, Y, and Z are seated around a circular table. T’s neighbours are Y and V. Z is seated third to the left of T and second to the right of S. U’s neighbours are S and Y; and T and W are not seated opposite each other. Who is third to the left of V?

- (A) X (B) W (C) U (D) T

Question Number : 63

Correct : 2 Wrong : -0.66

Trucks (10 m long) and cars (5 m long) go on a single lane bridge. There must be a gap of at least 20 m after each truck and a gap of at least 15 m after each car. Trucks and cars travel at a speed of 36 km/h. If cars and trucks go alternately, what is the maximum number of vehicles that can use the bridge in one hour?

- (A) 1440 (B) 1200 (C) 720 (D) 600

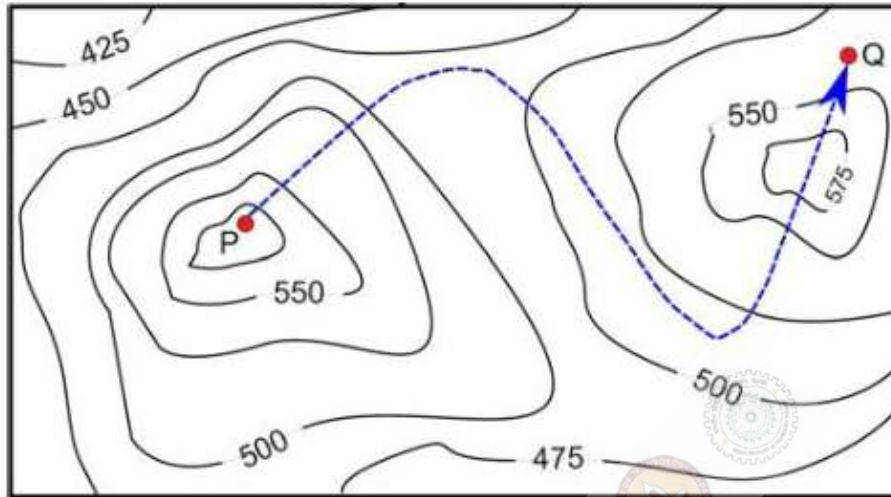
Question Number : 64

Correct : 2 Wrong : -0.66

There are 3 Indians and 3 Chinese in a group of 6 people. How many subgroups of this group can we choose so that every subgroup has at least one Indian?

- (A) 56 (B) 52 (C) 48 (D) 44

A contour line joins locations having the same height above the mean sea level. The following is a contour plot of a geographical region. Contour lines are shown at 25 m intervals in this plot.



The path from P to Q is best described by

- (A) Up-Down-Up-Down
- (B) Down-Up-Down-Up
- (C) Down-Up-Down
- (D) Up-Down-Up